



# Riverdale Grove

| STEADY | STRONG | RISING |

Construction Update: December 2025

**Important Note:** The newsletter provides the 'Construction Update' on the work in progress that happened in the month of December, 2025. The demand letters raised are being sent along with the milestone achievement certificates as per the actual and real time work progress on site.

Dear Homeowner,

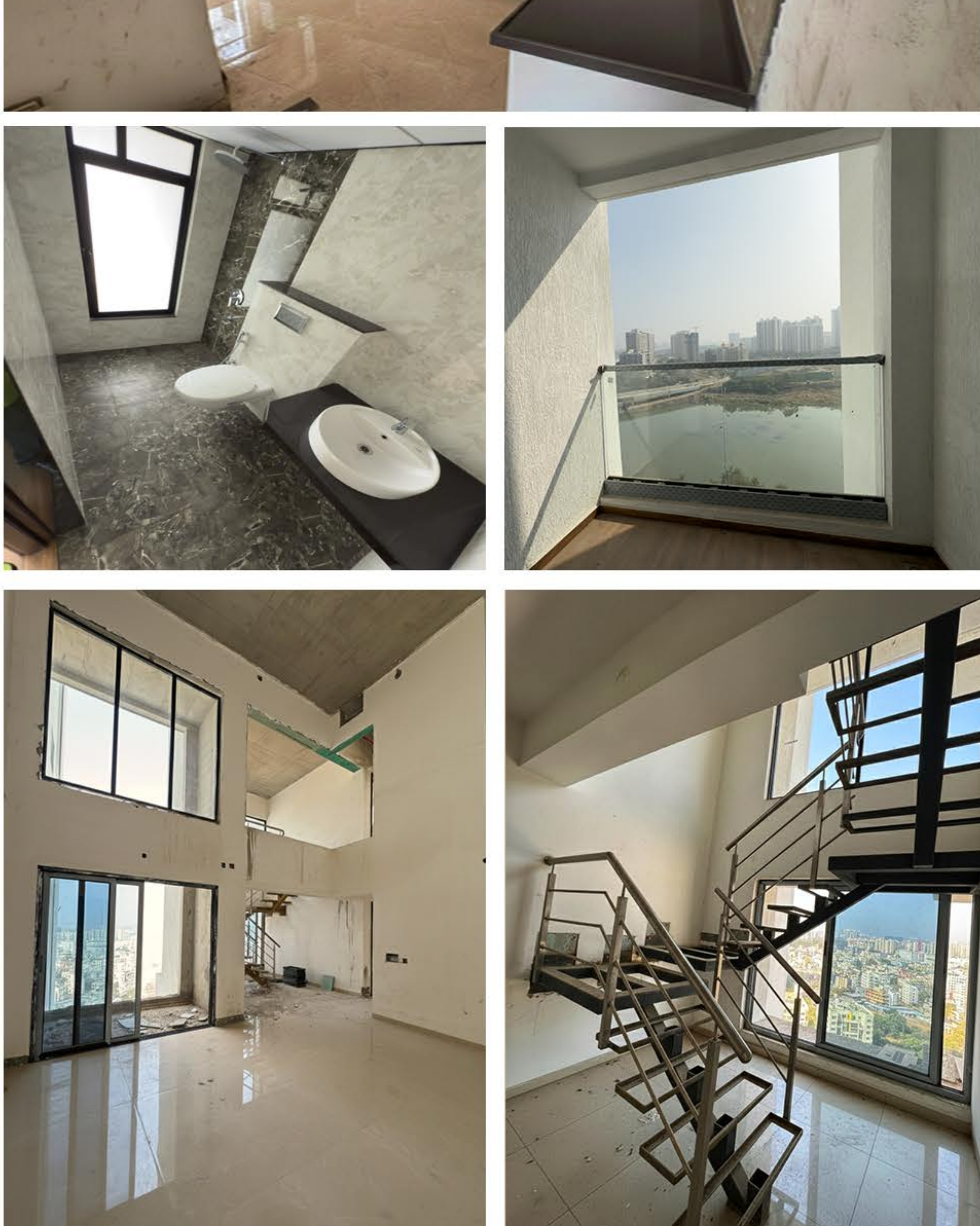
We are pleased to present the latest progress update from Riverdale Grove. Across all towers, construction momentum remains strong as we continue to meet milestones with precision and care.

We have some exciting developments in the pipeline for our esteemed customers which we shall be unveiling soon.

In the meanwhile, in order to make the referral process rewarding for each and every one of our customers,

we are requesting you to share your references with us at **ENVOY APP**.

## Snapshot: Internal Apartment



## Snapshot: Clubhouse

We're happy to share that the clubhouse's internal work is now 100% complete. The final touch of external painting is the only remaining activity.

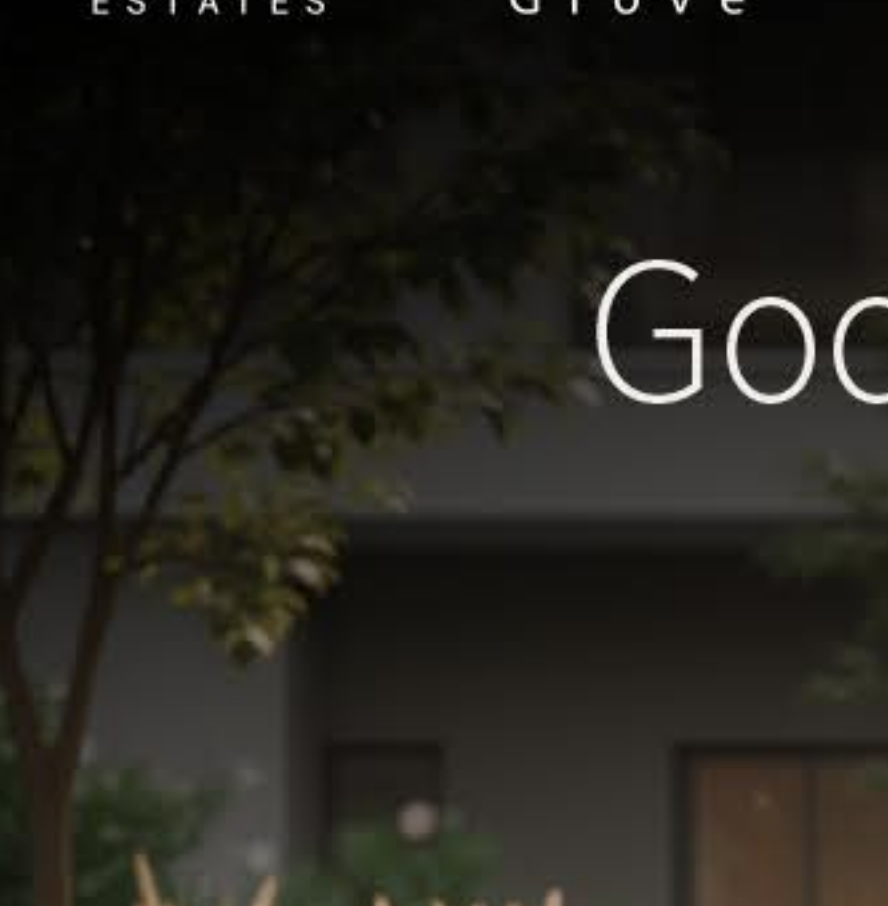
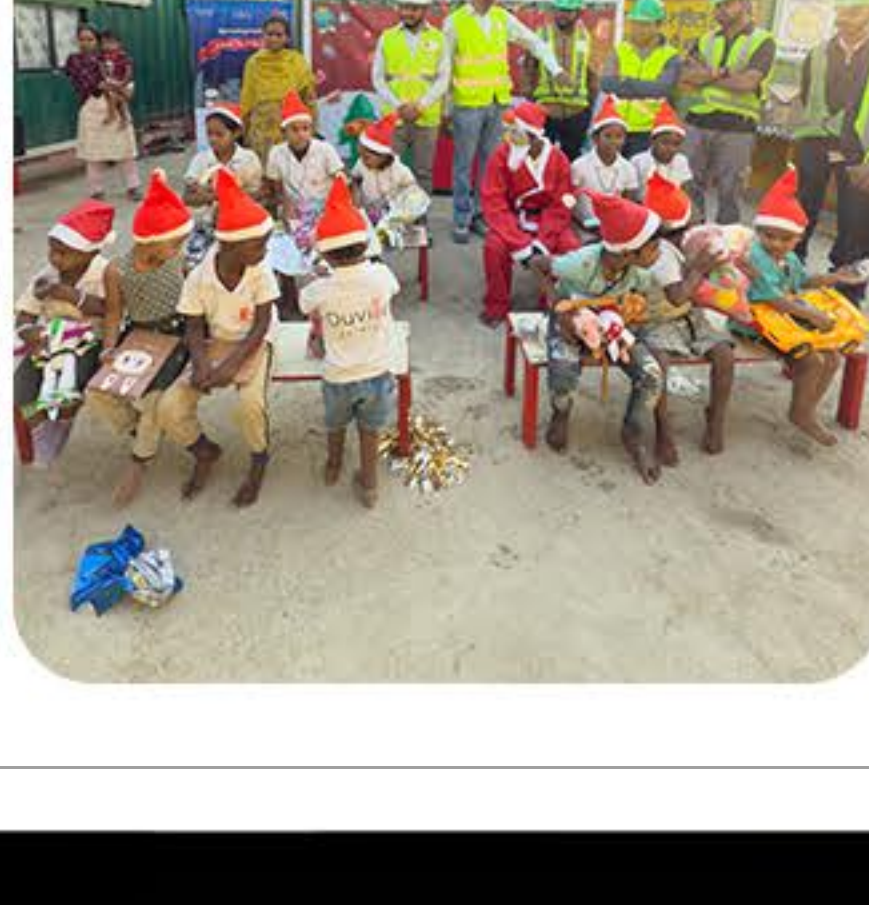


### CARING, ALWAYS.

This Christmas, **Duville Estates** spread festive cheer with a Toy Donation Drive for children at its labour camp an initiative rooted in kindness and togetherness.

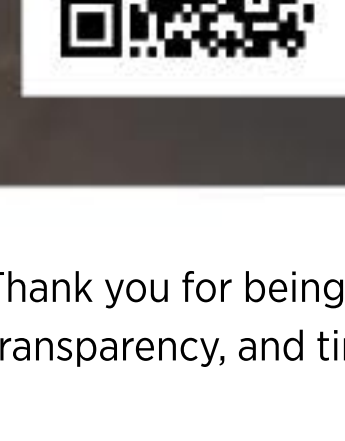
With heartfelt participation from residents across Riverdale Heights, Riverdale and supported by the Riverdale site teams, the drive became a shared act of giving.

The initiative culminated in a warm Christmas celebration as toys were distributed to the children. Their smiles said it all gentle reminders that simple gestures can create lasting joy and bring communities closer.



Good neighbours make great communities.

Invite yours through Duville Envoy.



Scan the QR code



or visit  
envoy.duville.com

Thank you for being a valued member of the **Riverdale Grove community**. We are committed to delivering quality, transparency, and timely updates as we build your future home.

Warm regards,  
The Riverdale Grove Team



https://maharera.maharashtra.gov.in/project/view/29414

Maha RERA Registration No. - P52100029023

+91 9922992628

info@duville.com

www.duville.com



Riverdale Grove, Plot Bearing / CTS / Survey / Final Plot No.: S No 16/2A, 17/1, 17/3, 17/4 and 17/5 at KHARADI, Haveli, Pune, 411014