



Riverdale Grove

STEADY | STRONG | RISING

Construction Update: November 2025

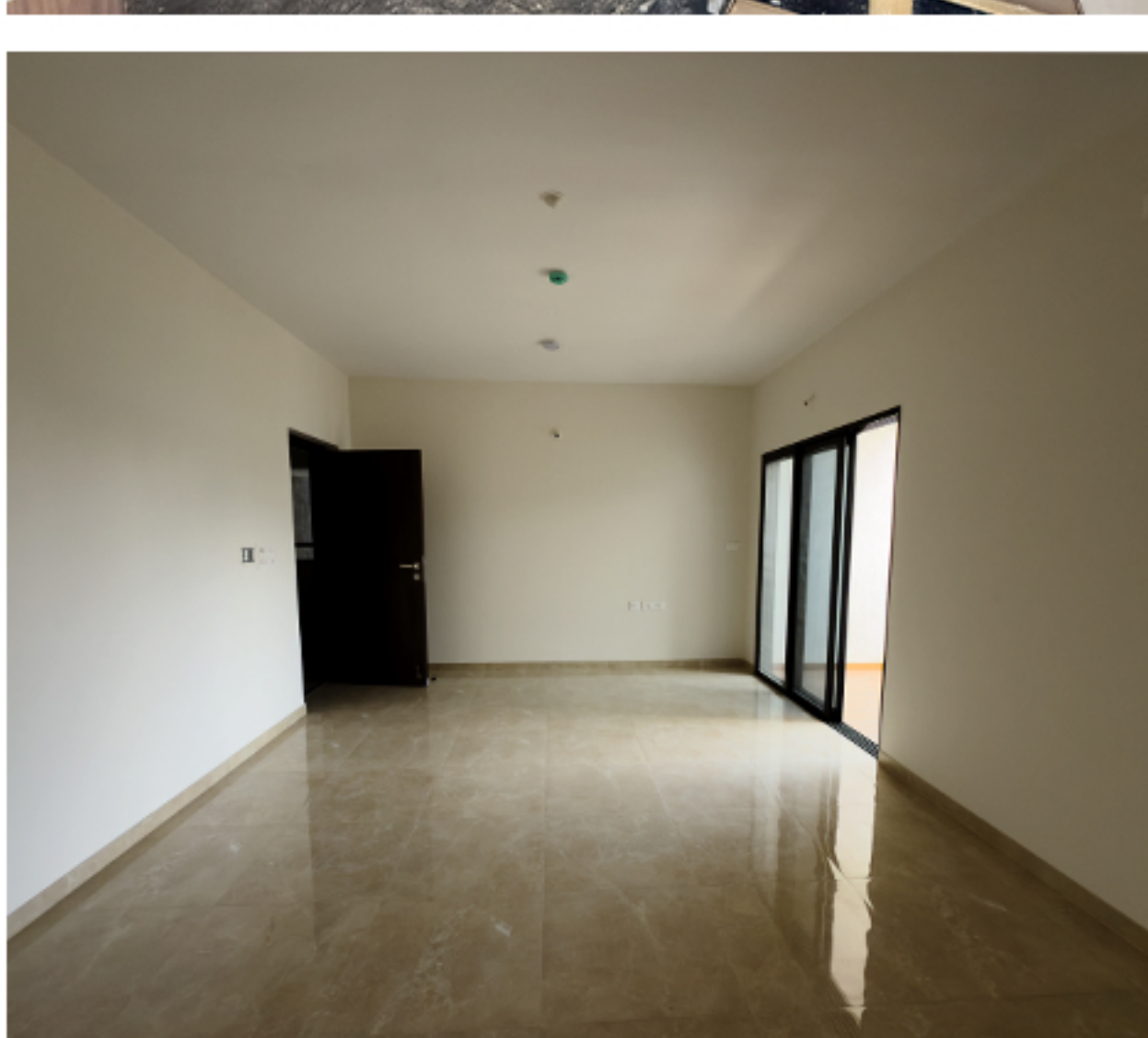
Important Note: The newsletter provides the 'Construction Update' on the work in progress that happened in the month of November, 2025. The demand letters raised are being sent along with the milestone achievement certificates as per the actual and real time work progress on site.

Dear Homeowner,

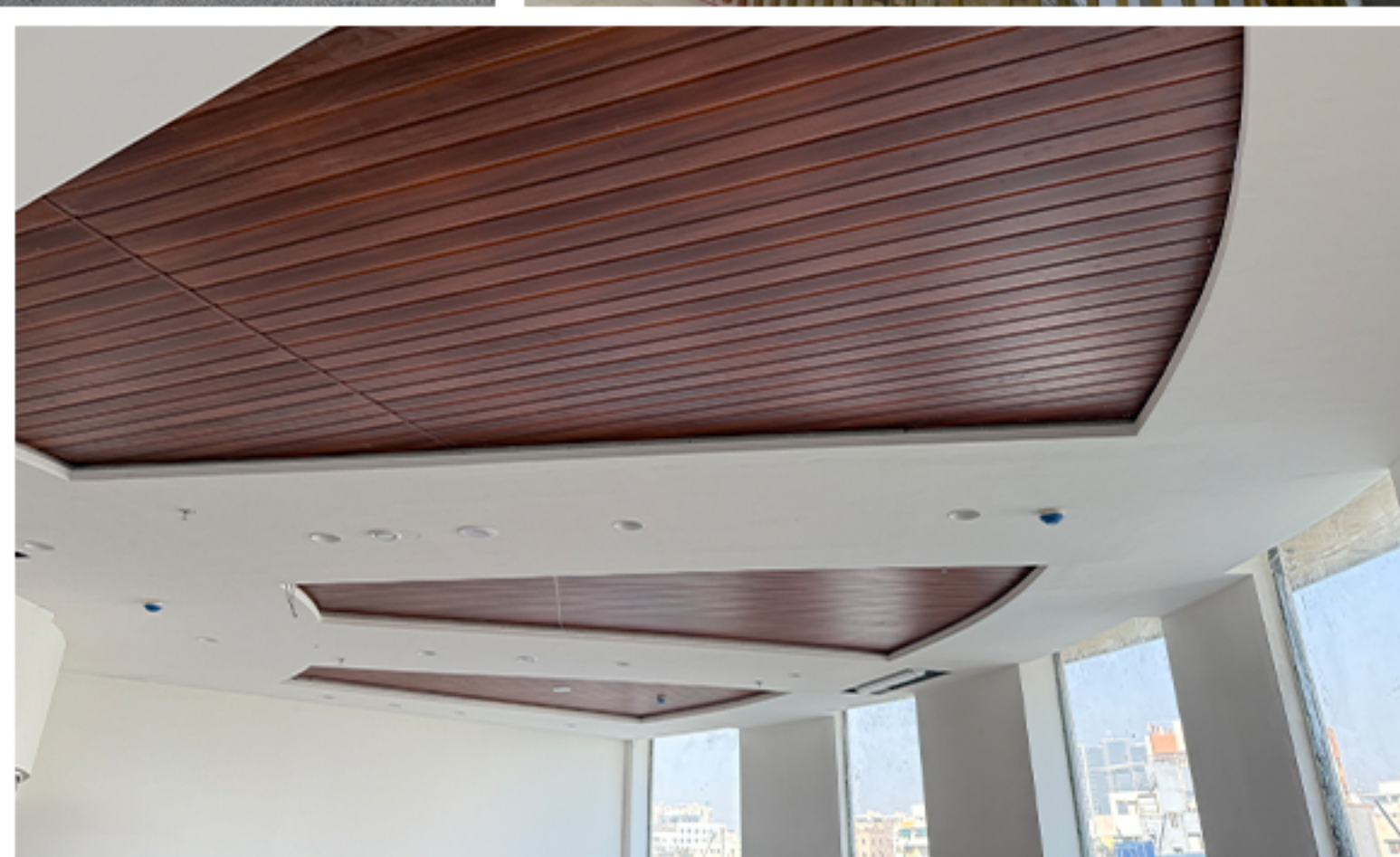
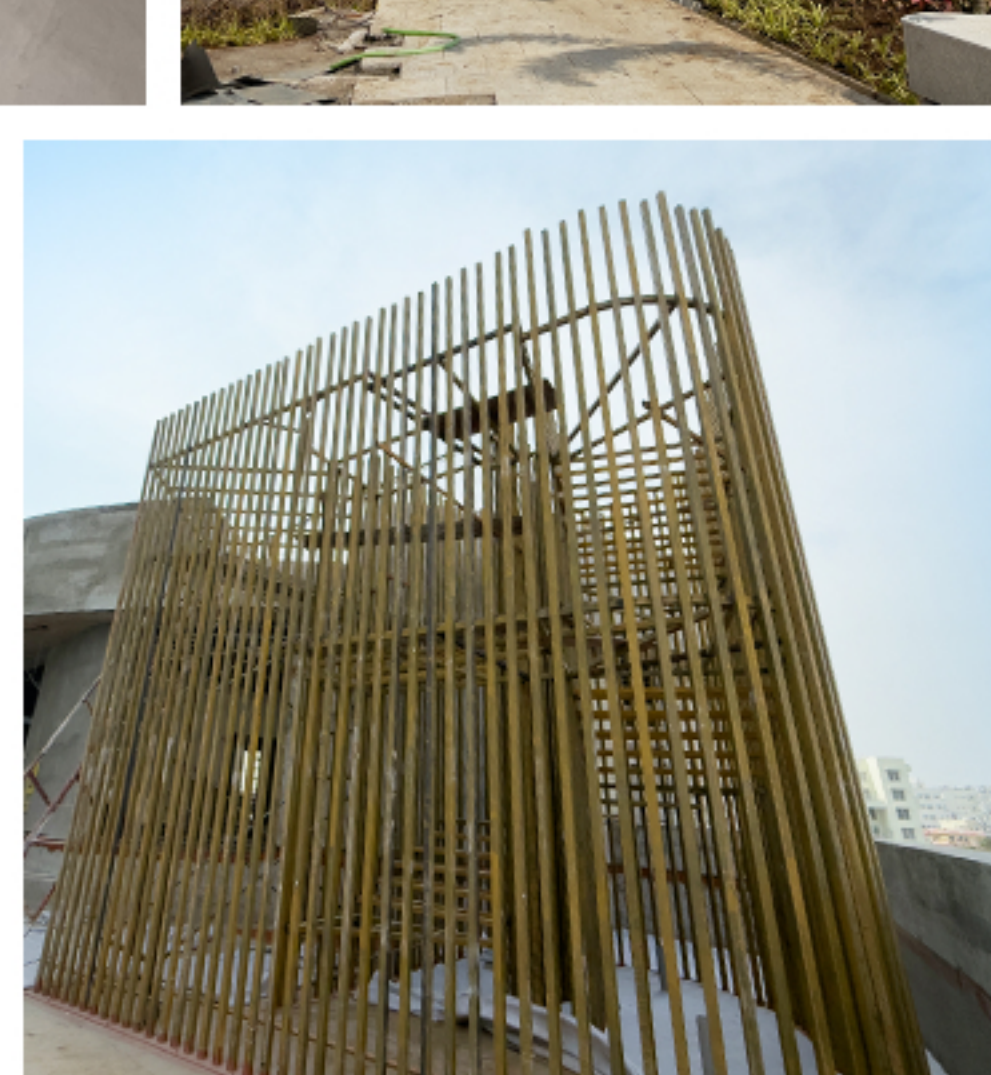
We are pleased to present the latest progress update from Riverdale Grove. Across all towers, construction momentum remains strong as we continue to meet milestones with precision and care.

We have some exciting developments in the pipeline for our esteemed customers which we shall be unveiling soon. In the meanwhile, in order to make the referral process rewarding for each and every one of our customers, we are requesting you to share your references with us at marketing@duville.com.

Snapshot: Internal Apartment



Snapshot: Clubhouse/Podium/Landscaping



Share the quiet.
Share the comfort.

Referring is simple through Duville Envoy.



Scan the
QR code

or Visit
duville.com/envoy

Thank you for being a valued member of the **Riverdale Grove community**. We are committed to delivering quality, transparency, and timely updates as we build your future home.

Warm regards,
The Riverdale Grove Team



<https://maharera.maharashtra.gov.in/project/view/29414>

Maha RERA Registration
No. - P52100029023

+91 9922992628
info@duville.com
www.duville.com



Riverdale Grove, Plot Bearing / CTS / Survey / Final Plot No.: S No 16/2A, 17/1, 17/3, 17/4 and 17/5 at KHARADI, Haveli, Pune, 411014