

Riverdale Grand

Construction Update: **May 2026**

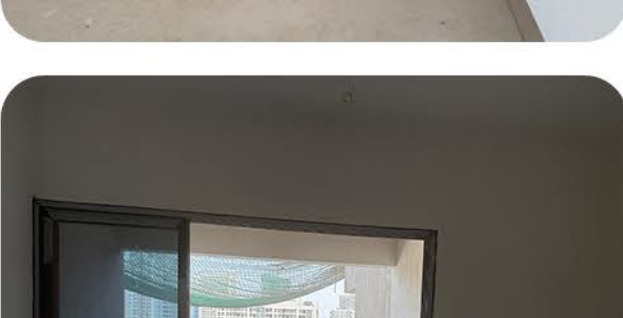
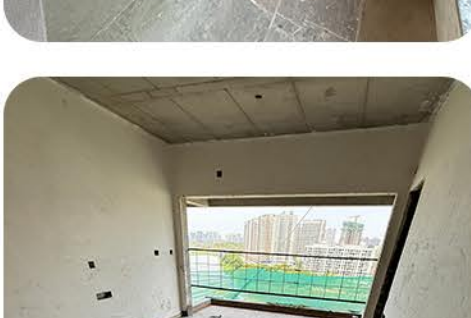
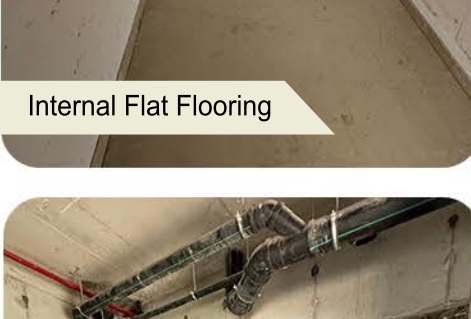
Important Note: The newsletter provides the 'Construction Update' on the work in progress that happened in the month of May, 2026. The demand letters raised are being sent along with the milestone achievement certificates as per the actual and real time work progress on site.

Dear Homeowner,

Dive into the latest updates from the Riverdale Grand community. We've made strong strides this month, in both residential and retail, along with meaningful on-site initiatives. We have some exciting developments in the pipeline for our esteemed customers which we shall be unveiling soon. In the meantime, to make the referral process more rewarding, we invite you to share your references with us through the **DUVILLE ENVOY APP**.

You can view more images in the gallery section of DUVILLE ENVOY APP under the project Riverdale Grand.

B1 TOWER

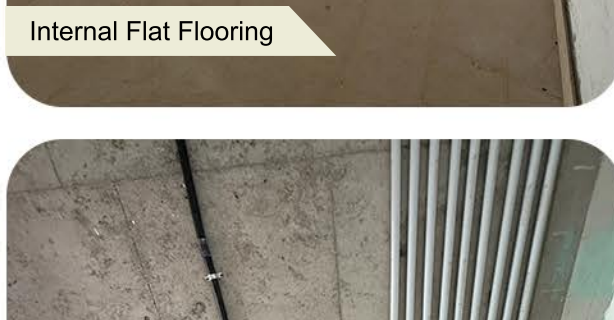


✓ Waterproofing - 25th slab in progress

✓ Firefighting - 28th slab in progress



B2 TOWER



✓ Waterproofing - 25th slab in progress

✓ Firefighting - 27th slab in progress

B3 TOWER

Structural, internal finishing, and service works are progressing steadily, having completed till 32nd slab.



✓ Gypsum - 25th slab in progress

✓ Waterproofing - 17th slab in progress

✓ Firefighting - 26th slab in progress

B4 TOWER

Structural work is ongoing, having reached the 12th slab.



✓ RCC 12th slab in progress.

✓ Internal finishing - 7th slab in progress



UNHEARD OF. UNBELIEVABLE. UNIMAGINABLE.

₹4 Lakh referral fee for the largest riverfront apartment.

9922992628
WWW.DUVILLE.COM



Thank you for being a valued member of the Riverdale Grand community. We are committed to delivering quality, transparency, and timely updates as we build your future home.

Warm regards,
The Riverdale Grand Team

Riverdale Grand, Plot Bearing / CTS / Survey / Final Plot
14/1/2(P), 16/2A(P), 16/2B, 16/3(P) at KHARADI, Havell, Pune - 411014

+91 9922992628
info@duville.com
www.duville.com
duville.estates



MahaRERA No. - P52100034877
https://maharera.maharashtra.gov.in/project/view/31683