

Riverdale Grand

Construction Update: April 2026

Important Note: The newsletter provides the 'Construction Update' on the work in progress that happened in the month of April, 2026. The demand letters raised are being sent along with the milestone achievement certificates as per the actual and real time work progress on site.

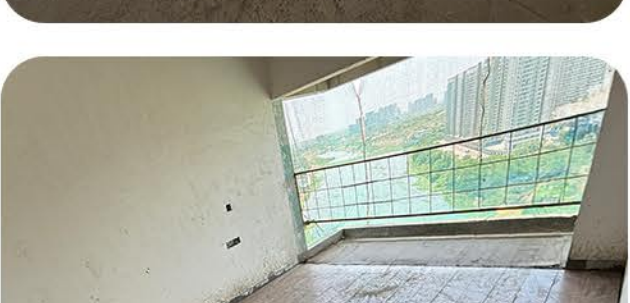
Dear Homeowner,

Dive into the latest updates from the Riverdale Grand community. We've made strong strides this month; in both residential and retail, along with meaningful on-site initiatives. We have some exciting developments in the pipeline for our esteemed customers which we shall be unveiling soon. In the meantime, to make the referral process more rewarding, we invite you to share your references with us through the **DUVILLE ENVOY APP**.

You can view more images in the gallery section of DUVILLE ENVOY APP under the project Riverdale Grand.

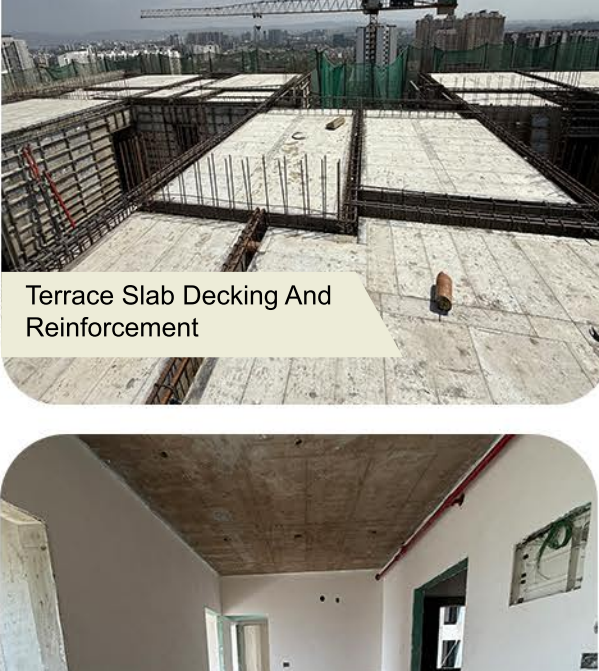
B1 TOWER

Structural, internal finishing, and Service works are progressing steadily, having completed till 33rd slab (Terrace).



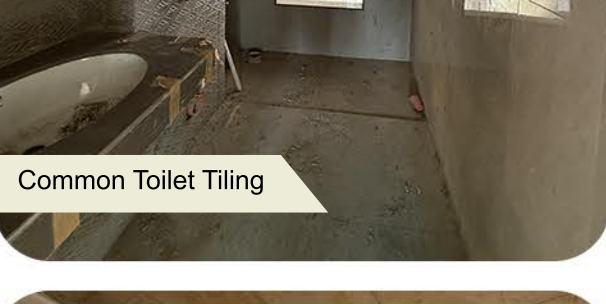
Waterproofing - 24th slab in progress

Firefighting - 26th slab in progress



B2 TOWER

Civil and internal works are underway, progressing beyond the 33rd slab.

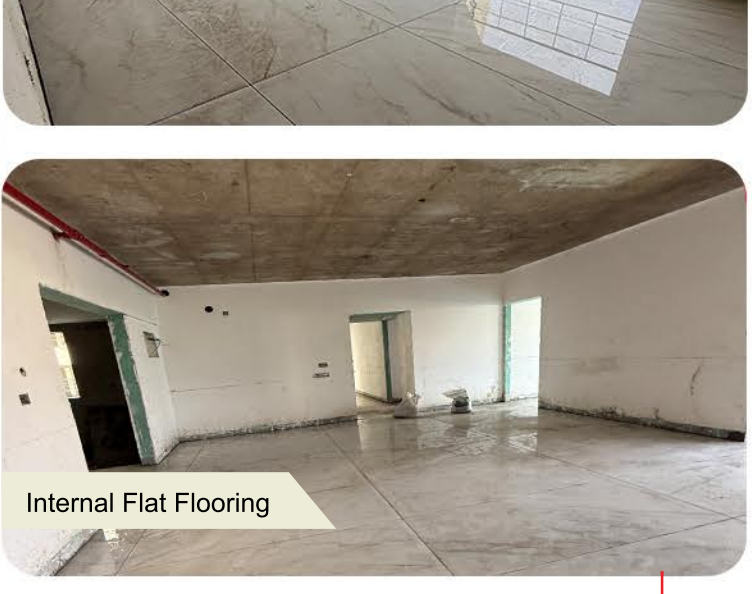
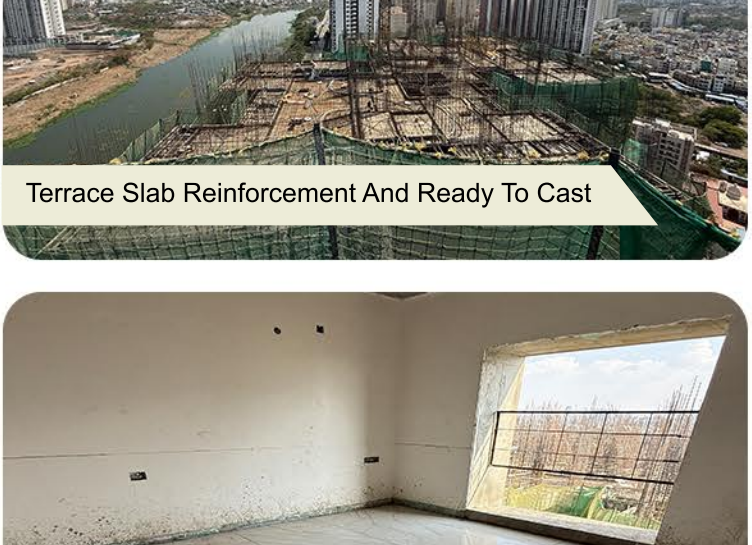


Firefighting - 26th slab in progress

Waterproofing - 24th slab in progress

B3 TOWER

Civil and internal works are underway, progressing beyond the 31st slab.



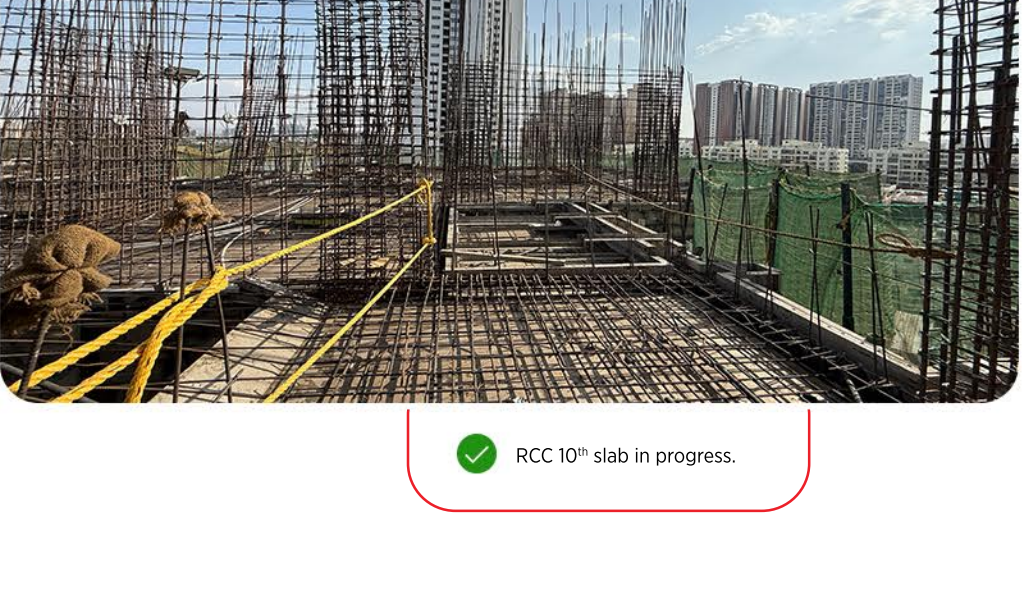
Gypsum - 23rd slab in progress

Waterproofing - 16th slab in progress

Firefighting - 24th slab in progress

B4 TOWER

Structural work is ongoing, having reached the 10th slab.



UNHEARD OF. UNBELIEVABLE. UNIMAGINABLE.

₹4 Lakh referral fee for the largest riverfront apartment.

9922992628
WWW.DUVILLE.COM



Thank you for being a valued member of the Riverdale Grand community. We are committed to delivering quality, transparency, and timely updates as we build your future home.

Warm regards,
The Riverdale Grand Team

Riverdale Grand, Plot Bearing / CTS / Survey / Final Plot
14/1/2(P), 16/2A(P), 16/2B, 16/3(P)
at KHARADI, Haveli, Pune - 411014

+91 9922992628
info@duville.com
www.duville.com
duville.estates



MahaRERA No. - P52100034877
https://maharera.maharashtra.gov.in/project/view/31683